

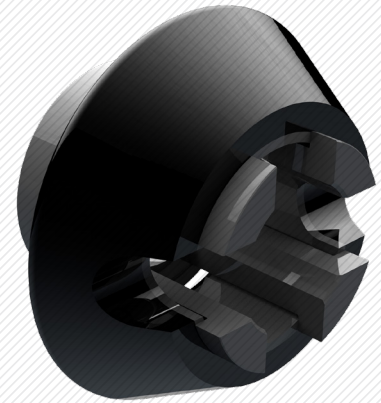
MAGNUM TOOL PUSHER™

Innovation revealed

The Tool Pusher™ is a simple solution to an ever increasing problem. In today's times where lateral sections are getting longer by the project, wireline pumpdown efficiency has suffered. This innovative product reduces fluid bypass area around the bottomhole assembly using a decades old, field proven swab design without interfering with conduction signal or adding length to the toolstring. By decreasing water consumption and increasing run in hole tension, wireline pumpdown can now achieve levels of efficiency that were previously written off to history.

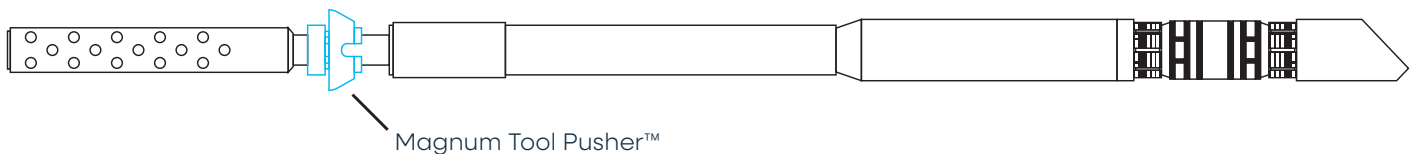
Features

- Non-BHA interfering design
- No moving parts
- No risk of product loss downhole
- Universal BHA size design
- Compatible with existing quick change/plug & shoot connection subs
- Less than 1 minute redressable/interchangeable
- Designed with adequate fluid bypass channels to prevent a swabbing effect while pulling out of hole.
- Custom sizes available upon request



The simple solution to an ever increasing problem, this innovative product reduces fluid bypass area around the bottomhole.

Bottom Hole Assembly



For more information, and to find a representative near you, visit nineenergyservice.com